



„Ujście Warty” National Park Visitor Center in Słońsk. Photo Olga Betanska

Enjoy your visit!

Tourist brochure valid for 2023

„Ujście Warty” National Park Visitor Center:

-modern exhibits highlight the nature and history of „Ujście Warty” National Park and the area around

Tourist infrastructure (see map):

- Viewing tower by the National Park's headquarters in Chyrzyno, entrance fee – 4 PLN
- Viewing tower „Czarnowska Górka” with mockups of northern lapwings and education and fitness playground
- Viewing tower „Alder Swamp” („Olszynki”)
- Viewing tower by „Yellow Road” („Żółta Droga”)
- Viewing platform „Concrete Road” („Betonka”)
- Birdwatching hide by „4th Bridge” („IV Most”)
- Birdwatching hide on the floating footbridge „Alder Swamp” („Olszynki”)

Worth seeing:

- Kostrzyn Fortress Museum in Kostrzyn nad Odrą
- Polish Arms Glory Museum in Witnica
- Martyrology Museum in Słońsk
- Meadow Museum in Owczary
- Brewing Museum and brewery in Witnica
- Guarding forts of Kostrzyn Fortress: Sarbinowo, Czarnów, Żabice and Gorgast (in Germany)
- Palace, farm and park complex in Dąbroszyn with a neo-Gothic palace and church
- Defensive chapel of the Templars in Chwarszczany
- Church and palace ruins of the Sovereign Military Order of Malta in Słońsk
- Historic pumping stations in Kostrzyn – Warniki, Słońsk and Chyrzyno
- Regional Memorabilia Exhibition in Słońsk
- Battlefield in Sarbinowo
- Cemetery Stalag III C Alt Drewitz in Kostrzyn – Drzewice
- Arrangements and buildings of Olenders village Studzionka
- Arrangements and buildings of villages Grodzisk, Zaszczutowo, Oksza and Kłopotowo
- Dinosaurs' Park in Nowiny Wielkie

Opening hours:

„Ujście Warty” National Park Headquarters and educational center in Chyrzyno are open Monday to Friday from **7.30 a.m. to 3.30 p.m.**

Entrance to the „Natural Garden of Senses”, viewing tower are also possible from 25/03 to 31/10 during additional hours:

- workdays from 3.30 p.m. to 6 p.m.
- weekend from 10 a.m. to 6 p.m.

„Ujście Warty” National Park Visitor Center in Słońsk:

High season (1/03-31/10)

- Tuesday to Friday : 9 a.m. to 4 p.m.
- Weekend: 9 a.m. to 5 p.m.

Low season (1/11-28/02):

- Tuesday to Sunday: 9 a.m. to 3 p.m.

You can stay in the park from dawn to dusk.

Address:

„Ujście Warty” National Park
Chyrzyno 1
69-113 Górzycyca

Contact:

Tel. 0048 95 7524027

„Ujście Warty” National Park
Visitor Center
ul. 3-go Lutego 90
66-436 Słońsk

Tel. 0048 95 7572110
muzeum@pnujsciewarty.gov.pl

www.pnujsciewarty.gov.pl



Let the wetlands buzz with life!

Let the wetlands buzz with life!



Common rosefinch. Photo Waldemar Wojdyłak

Nature paths:

1. „On the Bird's Trail” („Ptasim szlakiem”)

The path goes along a concrete road situated in one of the Park's most attractive birds' breeding grounds. Spring is the best time to visit.



2. „Wetlands” („Mokradła”)

The path is located close to Park's headquarters. It shows different roles that wetlands play in nature and human economy.



3. „By two wheels across the Northern Polder”

(„Na dwóch kółkach przez Polder Północny”)

Nature and historical path. It leads across vast meadows. One of its sections goes along Warta River.



4. „Alder swamp” („Olszynki”)

This path is situated on the Northern Polder (Polder Północny). Visitors can walk on a wooden footbridge going through a forest (alder blackcurrant swamp), communities of herbs, wet meadow and reed canary grass rushes.



5. „Peat Path” („Torfianka”)

A path leading partly on a wooden footbridge through peat fields and canary grass bushes. You can shorten path no. 3



6. „Natural Garden of Senses” („Przyrodniczy Ogród Zmysłów”)

The garden is located near the Park's headquarters in Chyrzyno. It has got few stops, the majority of them is interactive. It's subject to an entrance fee (the price includes entrance to the viewing tower).

Tourist trails:

Yellow trail – 12,3 km

Across „Ujście Warty” National Park goes a section (12,3 km) of the yellow bike trail Dąbroszyn-Gostkowice its whole length is 28,7 km. The trail starts in Dąbroszyn towards Warta River and after east on the dyke until Sierżant Lake.

Green trail – 3,4 km

The green trail is a short one, it begins in Kamień Wielki and leads to Wał Północny (Northern Dyke) of Warta River. It crosses the National Park from Kamińska Grobla to Northern Dyke (Wał Północny) – „Niwka”.

Black trail (linking) – 1 km

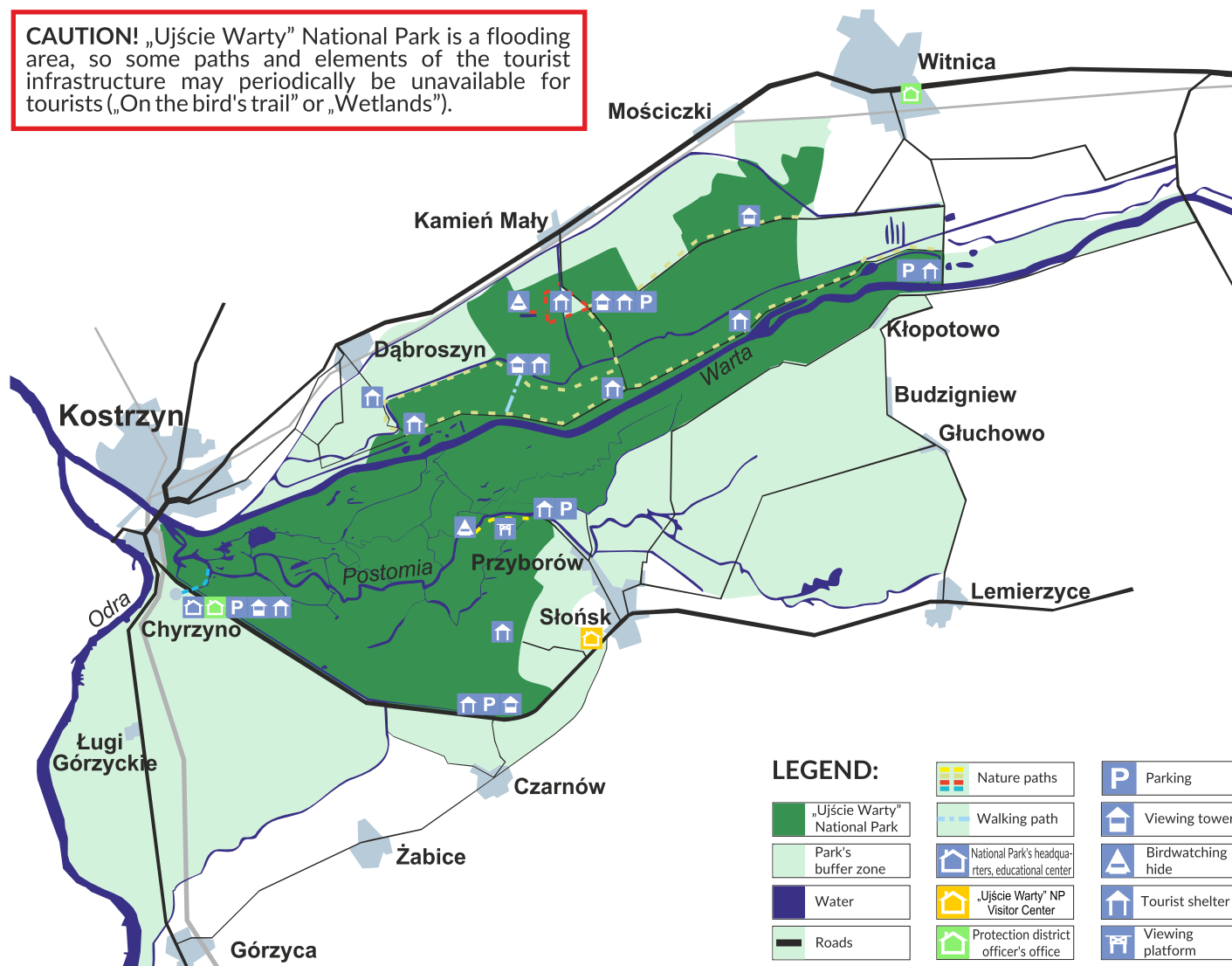
In „Ujście Warty” National Park there is also a fragment (1 km) of the black trail. It begins near the historic pumping station in Warniki and goes on the dyke to so called „Sluice” („Śluza”) where it joins the yellow trail.

Unmarked trails:

From „1st Bridge to 3rd Bridge” („I Most and III Most”) – the path is around 2,3 km long. It goes north from Przyborów. Trail from II do III Most is available from 16/06.

A road through „Hills” („Górki”) – a path around 3 km long. It goes south-west from Przyborów.

CAUTION! „Ujście Warty” National Park is a flooding area, so some paths and elements of the tourist infrastructure may periodically be unavailable for tourists („On the bird's trail” or „Wetlands”).



LEGEND:

	Nature paths		Parking
	„Ujście Warty” National Park		Viewing tower
	Park's buffer zone		Birdwatching hide
	Water		Tourist shelter
	Roads		Viewing platform
	National Park's headquarters, educational center		
	„Ujście Warty” NP Visitor Center		
	Protection district officer's office		

Birdwatching trails near the National Park (surroundings of Słońsk):

Graylag goose trail (red) 7 km long. It has a loop shape and starts by the church in Słońsk. It goes across the surrounding meadows.

Woodpecker trail (black) 5 km long. It begins by a bridge on the road Słońsk – Głuchowo and ends near the forester house in Lemierzyce. The route leads along the edge of a high cliff of Postomia River across the nature preserve: „Valley of River Postomia” (Dolina Postonii) and „Lemierzyce”.

Corn crane trail (yellow) 21 km long. It has a loop shape and starts by the church in Słońsk and goes through eastern dyke (along the border of the National Park) and further through Budzigniew and Jamno back to Słońsk.

Red kite trail (green) 14 km long. It has a loop shape and starts by the Martyrology Museum in Słońsk. Leads towards lakes Radachowskie and Głęboczek.

Hoopoe trail (blue) 13 km long. Starts by the Martyrology Museum in Słońsk and goes to Czarnów and further in the direction of Czerwony Kanał reaching road 22.